



Apt 28 Napier Street, Sheffield S11 8BP

Saxton Mee

Lettings

Apt 28 Napier Street

PCM

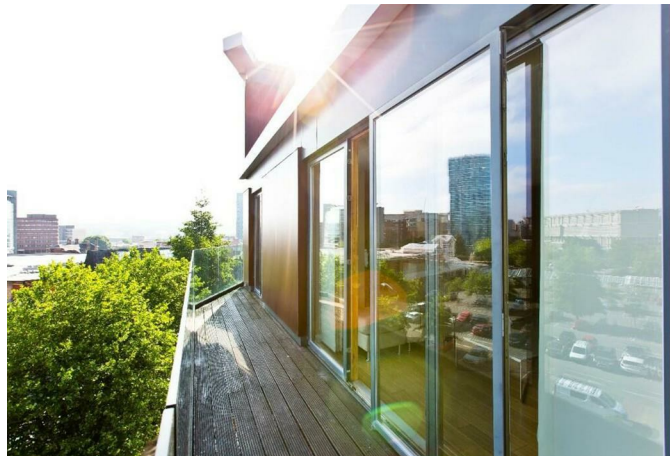
£1,395 PCM

This immaculately presented and spacious two double-bedroom apartment is ideally located close to Sheffield city centre, with an excellent selection of shopping and leisure facilities nearby. Sheffield's train and bus stations are within easy reach, while the popular bars and restaurants of Ecclesall Road are just a short distance away.

Apartment 28 is situated on the fourth floor and is accessible via both lift and stair access. The property offers a generously sized living area with ample space for dining, complemented by a high-quality fitted kitchen with integrated appliances.

Further benefits include underfloor heating throughout, sealed unit double glazing, a secure door entry system, and underground secure parking for one car.

- Underfloor Heating
- Double Glazed
- Lounge
- Integrated White Goods
- Dishwasher
- Laminate Flooring
- Parking for One Car
- Balcony





While we endeavour to make our sales particulars fair, accurate and reliable, they are only a general guide to the property and, accordingly, if there is any point, which is of particular importance to you, please contact the relevant office. The Agents have not tested any apparatus, equipment, fittings or services and so cannot verify they are in working order. The buyer is advised to obtain verification. Please note all the measurement details are approximate and should not be relied upon as exact. All plans, floor plans and maps are for guidance purposes only and are not to scale. Under no circumstances should they be relied upon as exact or for use in planning carpets and other such fixtures, fittings or furnishings. YOUR HOME IS AT RISK IF YOU DO NOT KEEP UP REPAYMENTS ON A MORTGAGE OR OTHER LOAN SECURED ON IT. 'A Life Assurance policy may be requested.' 'Written Quotations of credit terms available on request.'

Banner Cross
T: 0114 268 3241
E: bannercross@saxtonmee.co.uk
www.saxtonmee.co.uk

Hathersage
T: 01433 650009
E: hathersage@saxtonmee.co.uk

Bakewell
T: 01629 815307
E: bakewell@saxtonmee.co.uk

Matlock
T: 01629 828250
E: matlock@saxtonmee.co.uk



Lettings